

Some global  
experiences in

# Connectivity Conservation

**Dr Graeme L. Worboys**  
Vice Chair, Mountains and  
Connectivity Conservation  
IUCN WCPA




What is

# **Connectivity Conservation?**







**Large-scale**  
natural landscapes




Keeping the bush **intact**




Letting animals  
**move and survive**




**Interlinking** protected areas



**Restoring** landscapes




Involving many  
**people**



Across many **tenures**

**Big change**


is starting to affect us




Increasing **population**



Depleting  
**natural resources**




Destruction of **habitat**



Tough times for **agriculture**



Hotter **temperatures**



Changing **rainfall**

Things will be different  
**in the future**

Tension over **water**

**Some farms** too dry  
to work

**Population** centres  
grow or shrink

Whole new  
**economies**

The **mood** of  
the public will  
change

**Political** norms  
will change

We need to be

**Pro-active**





Recognise **threats**

Identify **opportunities**

Position **early**

Show **leadership**

Manage **change**

Adapt and **benefit**

How does this all relate to

**Connectivity Conservation?**



**Big** changes and **Big** issues need...

**Big** thinking

responses



# Connectivity Conservation



# Some **global experiences**



**Harvey Locke**

➤ Large-scale response

**NORTH AMERICA**

**Yellowstone to Yukon Connectivity Corridor**







**Tom Sengelama**

➔ **Conserving large, intact natural landscapes**



**CENTRAL AFRICA**

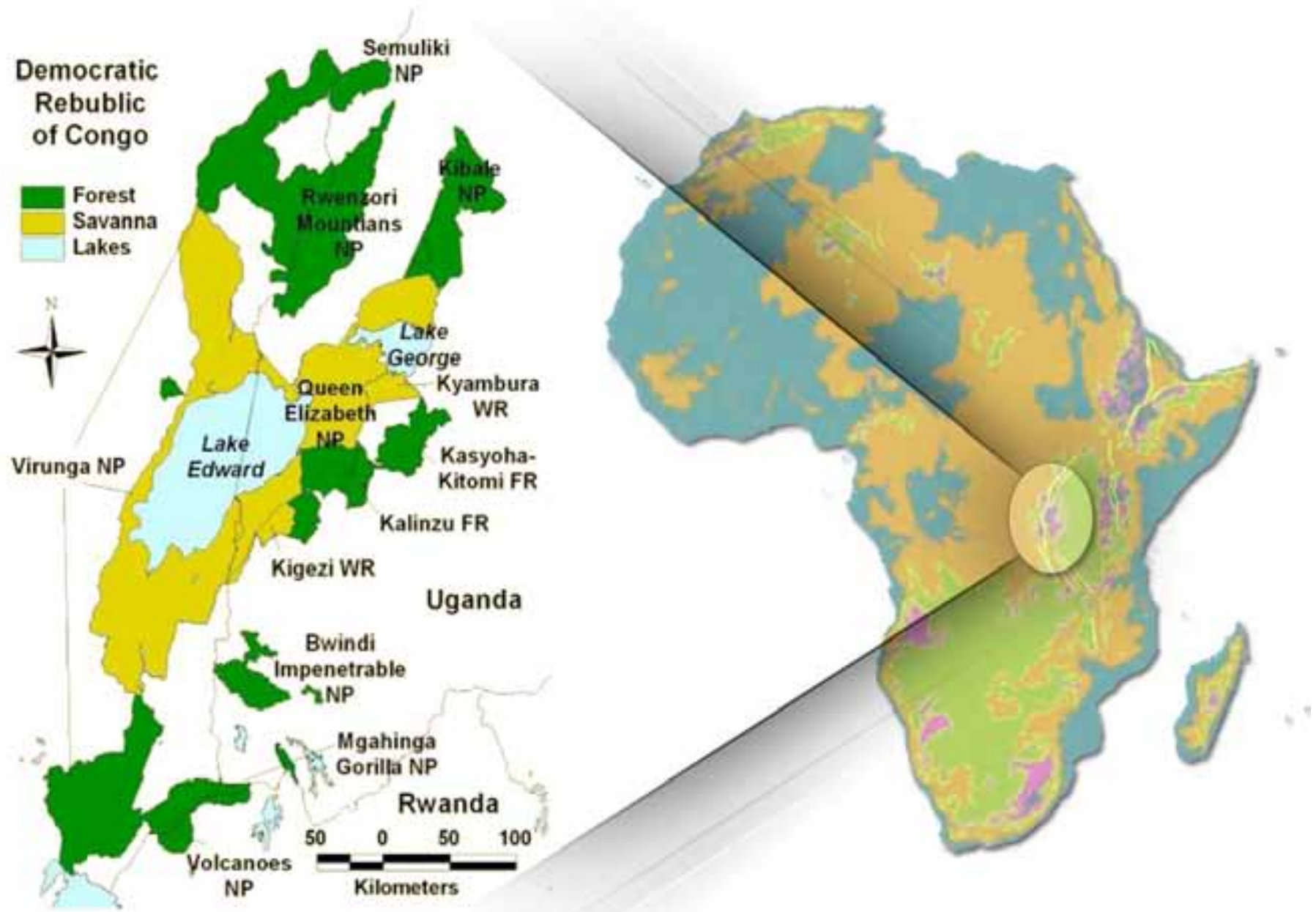
**Greater Virunga Landscape Connectivity Corridor**





Audio of Tom speaking

# Greater Virunga Landscape









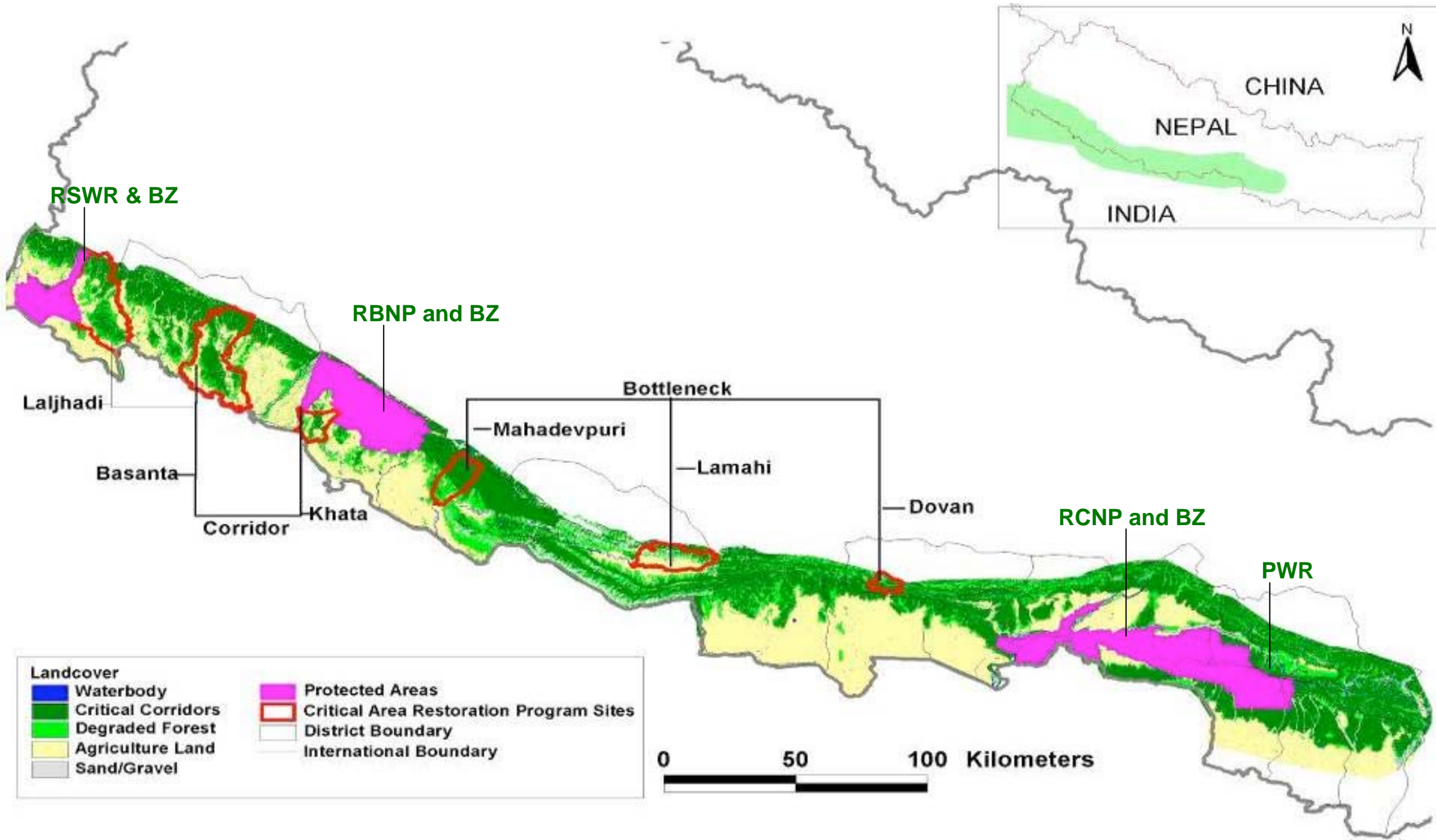
## Ghana Gurung

Conserving and restoring landscapes

Terai Arc Landscape



# Terai Arc Landscape - Nepal







# Restoration of degraded corridors and bottlenecks





## Tatyana Yashina

➤ Linking protected areas across political boundaries

ALTAI  
REPUBLIC

Altai - Sayan Megadiversity Corridor



Audio of Tatyana speaking



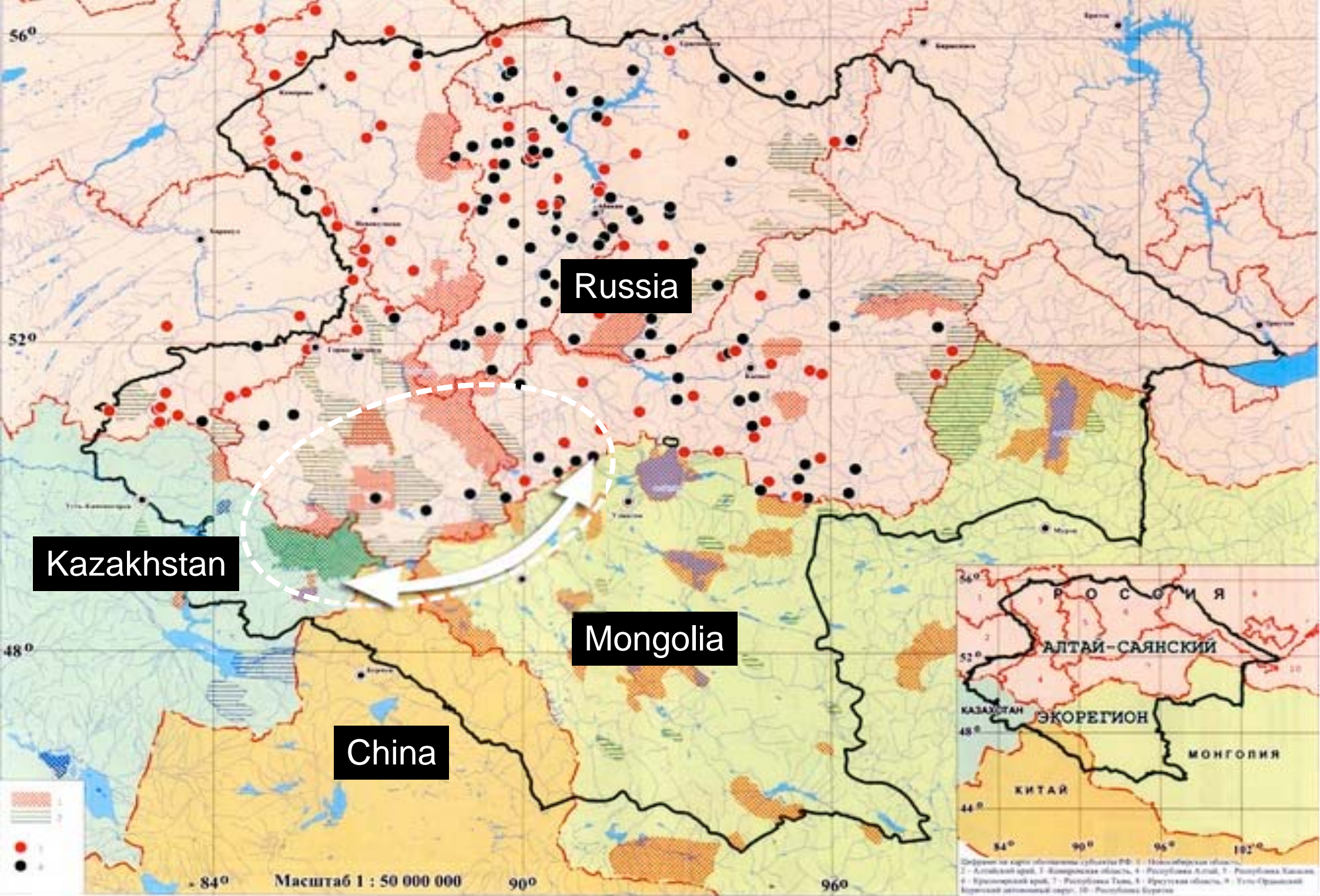
R U S S I A

KAZAKHSTAN

Altai Republic

MONGOLIA

C H I N A



Russia

Kazakhstan

Mongolia

China



Охраняемые природные территории Алтай-Саянского Экорегиона

Охраняемые природные территории: 1 - государственные, 2 - национальные. Охраняемые природные территории, не выраженные в масштабе карты: 3 - государственные, 4 - национальные.











**Nakul Chettri**

Investing in research

Sacred Himalayan Landscape Connectivity Corridor

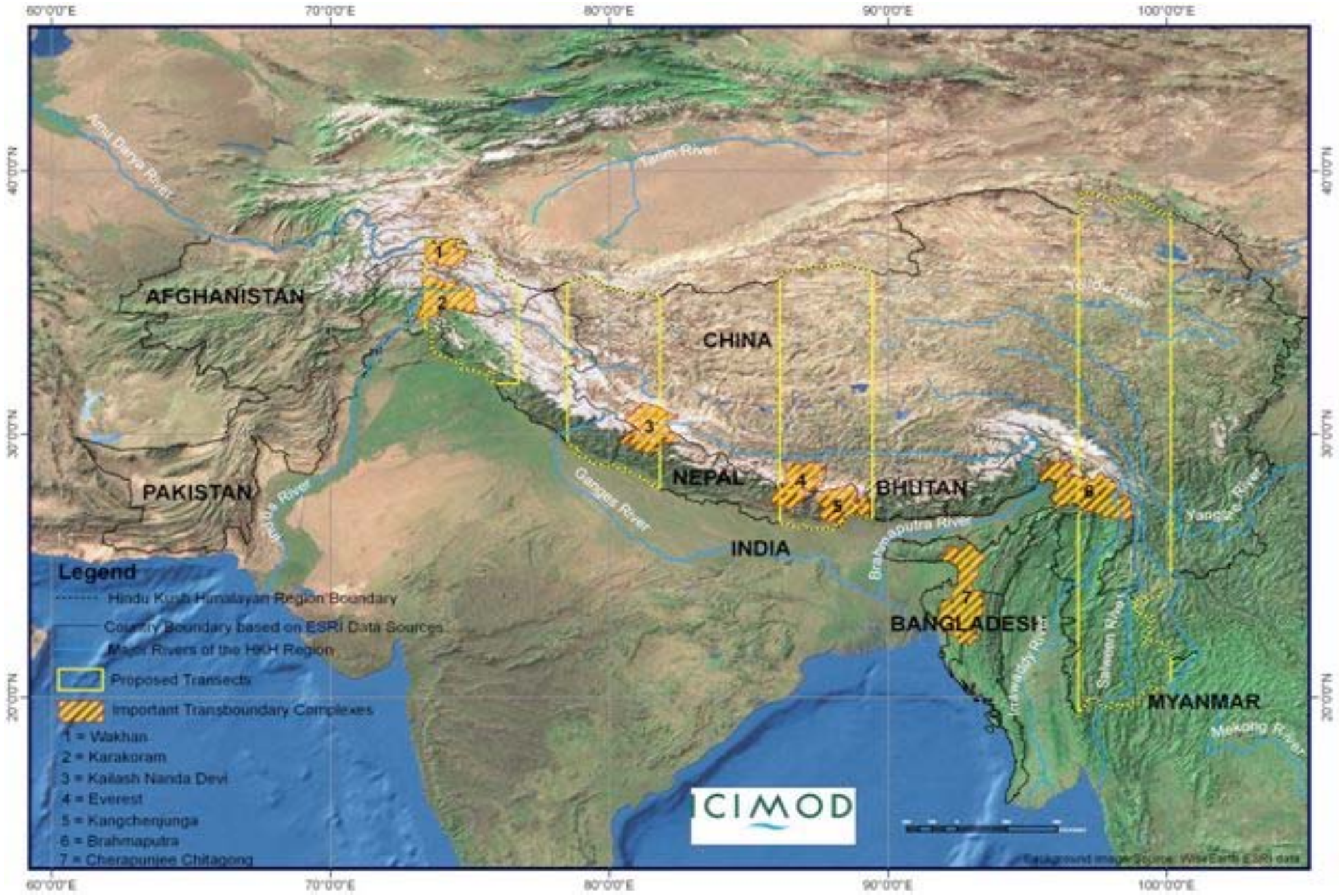


Video of Nakul speaking



Source: Ian Pulsford collection





# Parc Natural de Montserrat

Fundació  
Territori i Patrimoni

Ajuntament  
dal Bruc

Parc Natural de Montserrat  
Àrea del Coll de Cap Negre

El Parc Natural de Montserrat és un espai d'interès especial de Catalunya, declarat el 1987, amb l'objectiu de protegir i conservar el patrimoni natural i cultural que s'hi troba. El seu territori està situat a l'oest de la Serra de Montserrat, entre el municipi de Sant Martí de Llémena i el de Sant Joan de Vilatorrada.

**Característiques principals:**

- És un dels espais naturals més emblemàtics de Catalunya.
- Presenta una gran diversitat de paisatges, des dels boscos de pins i fagedes fins a les roques calcàries i els canions.
- És un refugi per a moltes espècies d'animals i plantes.

**Horari d'obertura:**

- Del 15 de març al 30 de setembre: de 9h a 19h.
- Del 1 d'octubre al 31 de març: de 10h a 18h.

**Contacte:**

- Telèfon: 93 88 11 222
- Correu electrònic: [info@parcnaturalmontserrat.cat](mailto:info@parcnaturalmontserrat.cat)

Miquel Rafa

Working with communities and multiple sectors

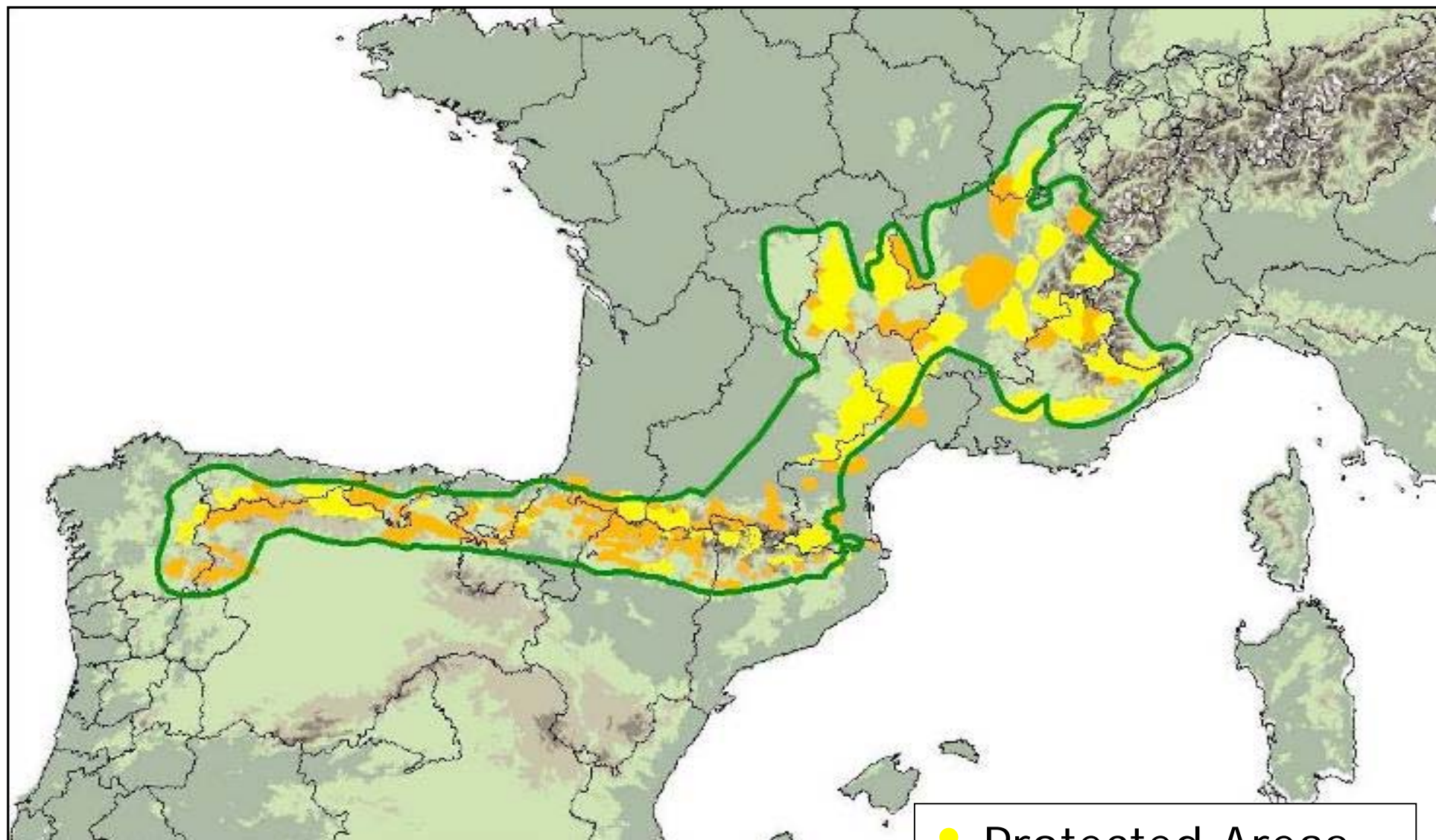
Cantabric - Pyrenees - Alps Great Mountain Corridor

EUROPE



# Rebuilding Natural Bridges across Western Europe





- Protected Areas
- Natura 2000





Wolves, bears, and other large carnivores are returning to western Europe. But is there still room for them?

# The Carnivore Comeback

ARBAS, FRANCE, AND MARIAZELL, AUSTRIA— This used to be just another sleepy village in the Pyrenees. But lately, the mayor of Arbas population 250, has received death threats the quiet central square has been turned into a

France's battle of the bears is one of the most vicious examples of a struggle taking

**SCIENCE VOL 314**

border fences between western and eastern Europe has allowed new immigration from

**3 NOVEMBER 2006**





**Trevor Sandwidth**

Working with farmers



**SOUTHERN AFRICA**

**Cape Floral Kingdom Connectivity Corridor**







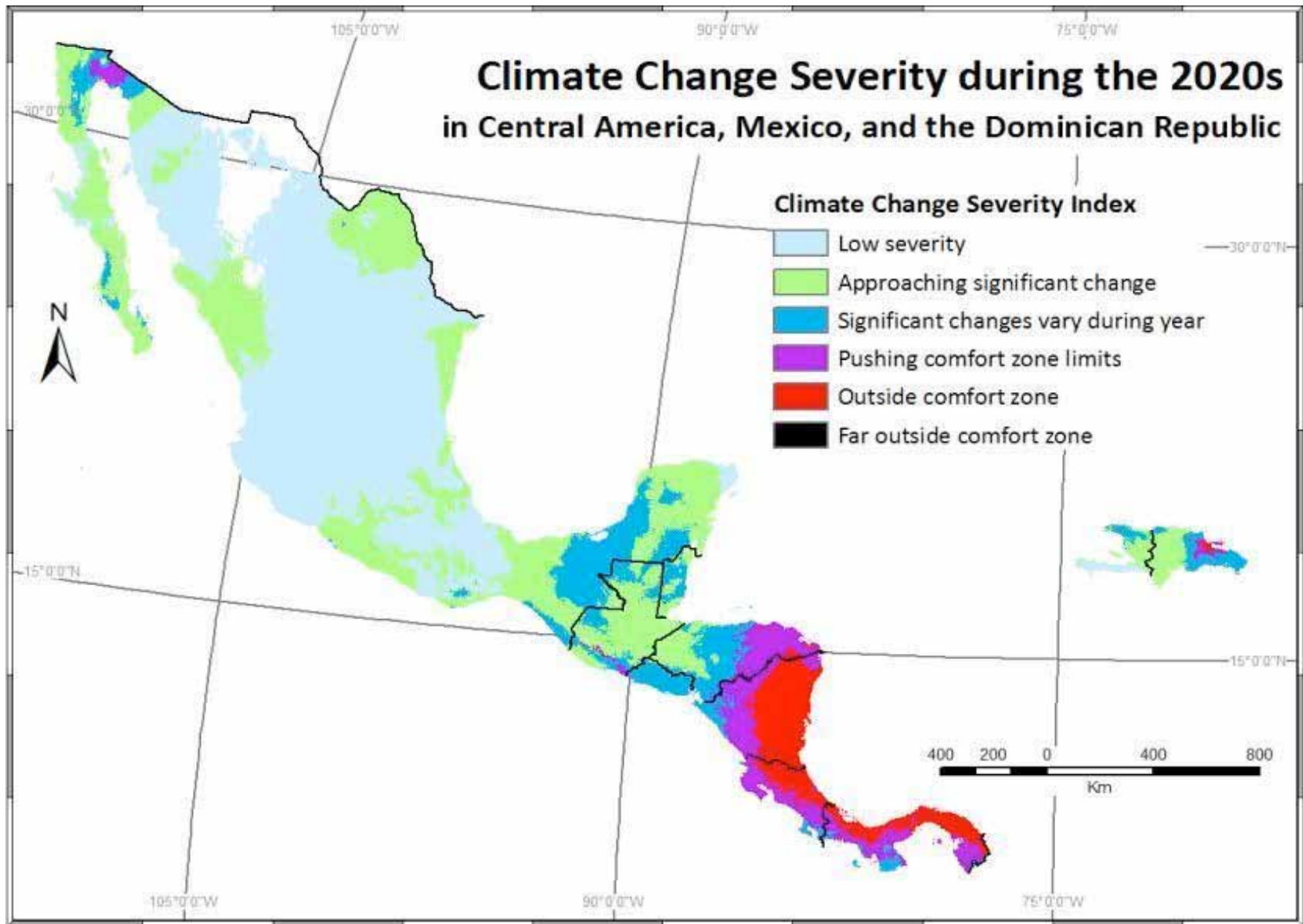
**Edüard Muller**

▶ Working with local communities

**CENTRAL AMERICA**

**Mesoamerica Connectivity Corridor**





*Potential Impacts of Climate Change on Biodiversity, CATHALAC 2008.*  
 Derived from: Worldclim Climate Grids, Current and Future conditions (HADCM3), 2008







**Paulina Arroyo**

▶ Working with indigenous communities

**ANDES MOUNTAINS  
ECUADOR**

**Cayamba - Coca Connectivity Conservation Corridor**





Video of Paulina speaking





BIENVENIDOS A LA

# RESERVA ECOLOGICA

CAYAMBE-COCA

CONVENIOS HEJOS CON LAS PROTECTORAS MARCACCHA Y LOBATO.  
ESTAMOS TRABAJANDO SIEMPRE EN FAVOR AL MEDIO AMBIENTE.







**Fausto Sarmiento**

Protecting ecological services

ANDES MOUNTAINS  
ECUADOR

Condor Biosphere Reserve Connectivity Corridor





Video of Fausto speaking





Paramos, Cayambe-Coca Ecological Reserve, Ecuador



Quito



**Ian Pulsford**

➤ Connectivity conservation in Australia



**EASTERN  
AUSTRALIA**

**Great Eastern Ranges Connectivity Corridor**

**Green:**  
Protected Areas

**Yellow:**  
Indicative A2A  
corridor

**Black Line:**  
Great Dividing Range

**Red Line:**  
Great Escarpment of  
Eastern Australia



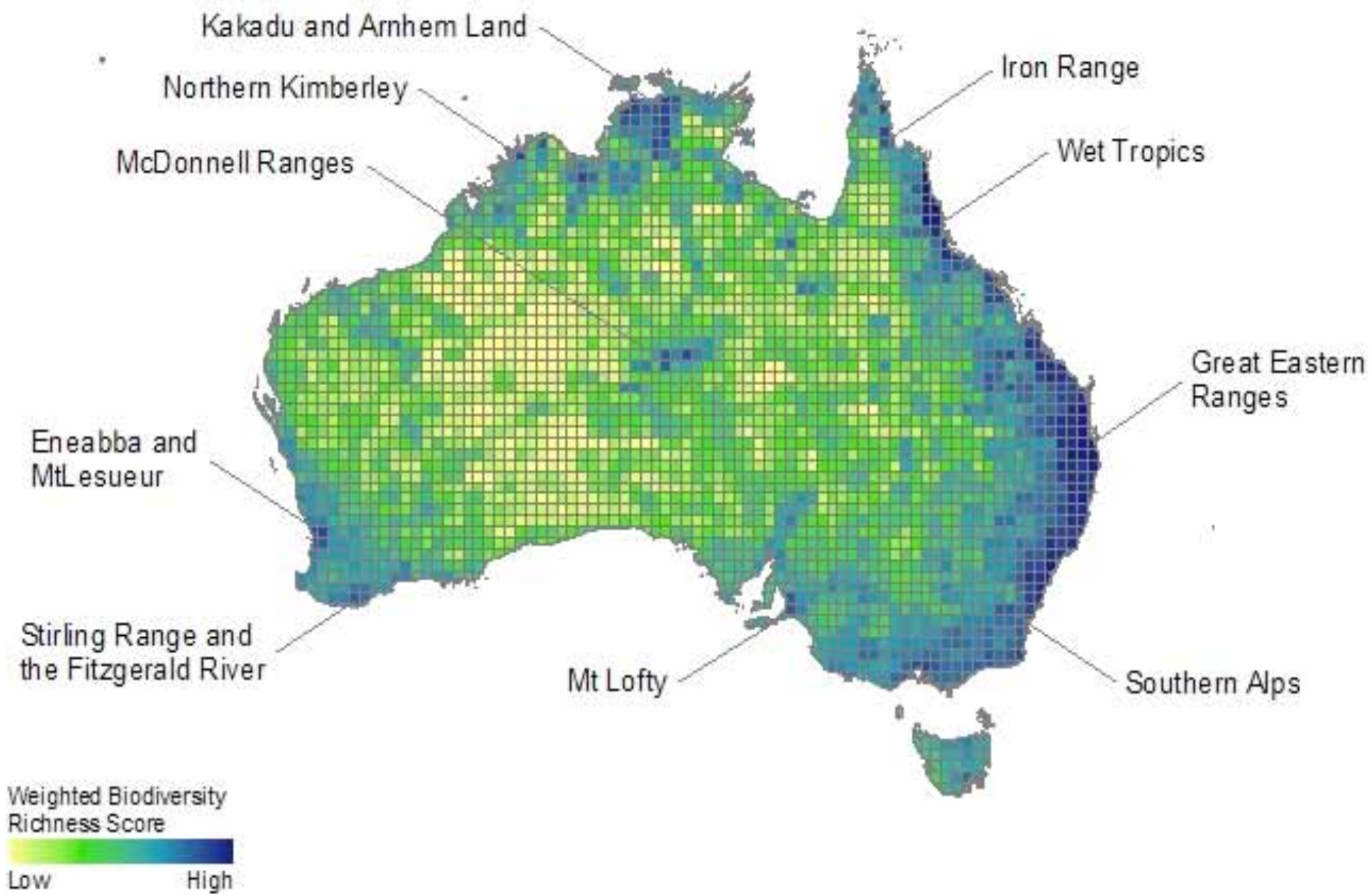
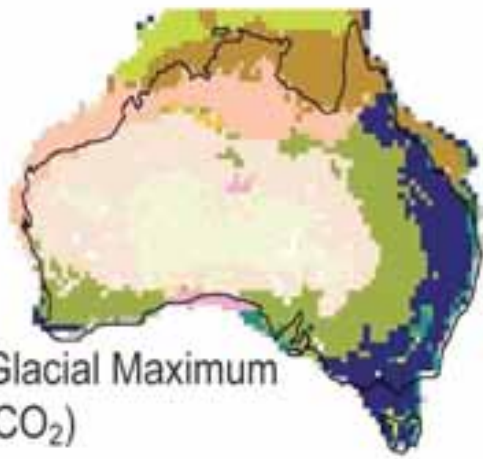
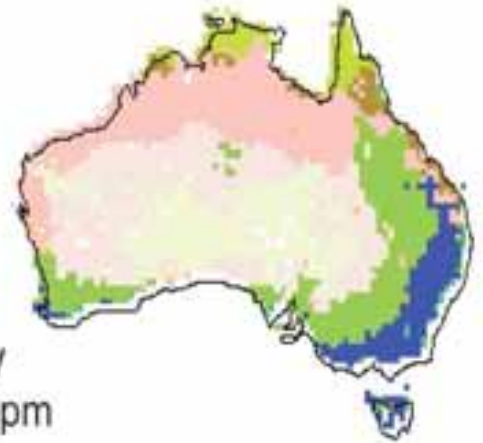


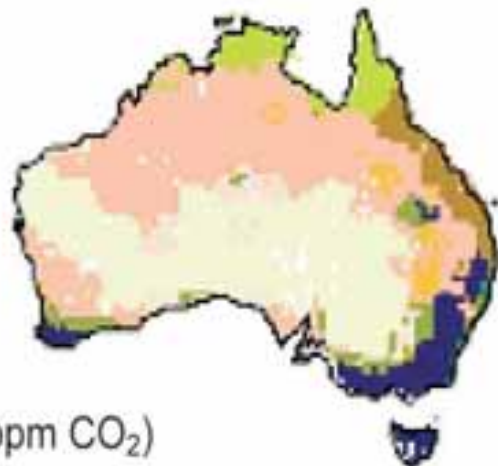
Image: Liz Dovey



Last Glacial Maximum  
(incl. CO<sub>2</sub>)



Today  
324 ppm



2100  
(600 ppm CO<sub>2</sub>)

- Tropical deciduous broadleaf forest & woodland
- Temperate evergreen needleleaf forest
- Warm-temp. evergreen broadleaf & mixed forest
- Tropical xerophytic shrubland
- Temperate xerophytic shrubland
- Temperate sclerophyll woodland and shrubland
- Temperate deciduous broadleaf savanna
- Tropical grassland
- Desert

Some lessons from these

## **Global experiences**





Show leadership



Respond big



Don't give up



Cross boundaries



Large-scale research



Focus on people



How can Australia provide  
**connectivity conservation leadership**  
for the world?



# The **Linking Landscapes** Summit

2009

